

**Kalmar DRG450-60C5**
**Lifting data**
**DRG450-60C5**

Lifting capacity at load centre L4, rated – at max. lifting height (kg)	45000 - 40000
Lifting capacity at load centre L5, rated – at max. lifting height (kg)	25000 - 25000
Lifting speed, unloaded – at 70% of rated load (m/s)	0,42 - 0,25
Lowering speed, unloaded – at rated load (m/s)	0,36 - 0,36

**Driving data**

Travelling speed forward, unloaded – at rated load (km/h)	26 - 22
Travelling speed backward, unloaded – at rated load (km/h)	18 - 16
Gradeability at 2 km/h, unloaded – at rated load (%)	35 - 19
Gradeability max., unloaded – at rated load (%)	38 - 22
Drawbar pull, max. (kN)	316

**Weight of trucks**

Service weight (kg)	73500
Axle load front at load centre L4, unloaded – at rated load (kg)	41000 - 107000
Axle load front at load centre L5, unloaded – at rated load (kg)	46700 - 91100
Axle load front at driving position according to EN 1459, and rated load (kg)	94300
Axle load rear at load centre L4, unloaded – at rated load (kg)	32500 - 11500
Axle load rear at load centre L5, unloaded – at rated load (kg)	26800 - 7400
Axle load rear at driving position according to EN 1459, and rated load (kg)	24200

**Engine**

Manufacturer - type designation	Volvo / TAD-1151-VE
Fuel - type of engine	Diesel / 4-stroke / EU 3A
Number of cylinders - engine volume (dm <sup>3</sup> )	6-inline / 10840
Power nominal / max, according to ISO-3046 – at revs (kW / rpm)	265 / 1450 - 2000
Torque max, according to ISO-3046 – at revs (Nm / rpm)	1785 / 1000 - 1450
Alternator, power (V/A)	AC - 4200 (28 / 150)
Starting battery, voltage – capacity (V – Ah)	2×12 – 135-145
Fuel consumption, normal driving (l/h)	14 - 20 (EDM 3x)
AdBlue consumption, normal driving (% of diesel)	-

**Transmission**

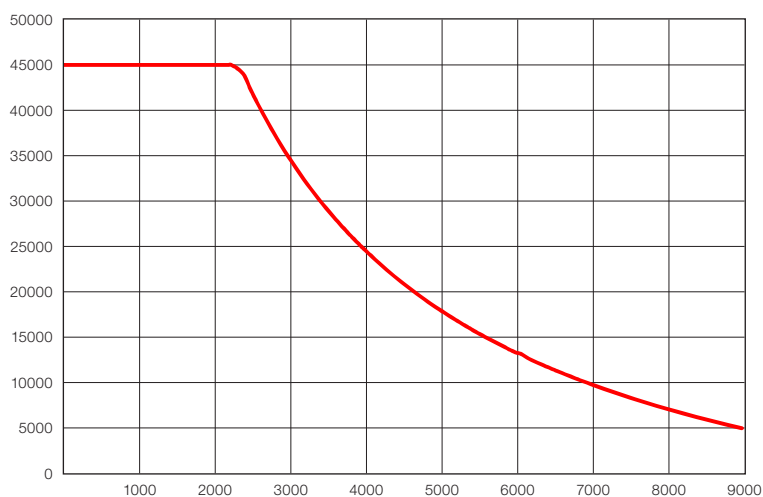
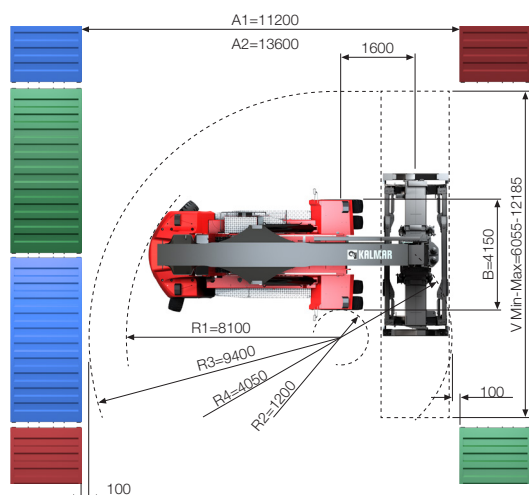
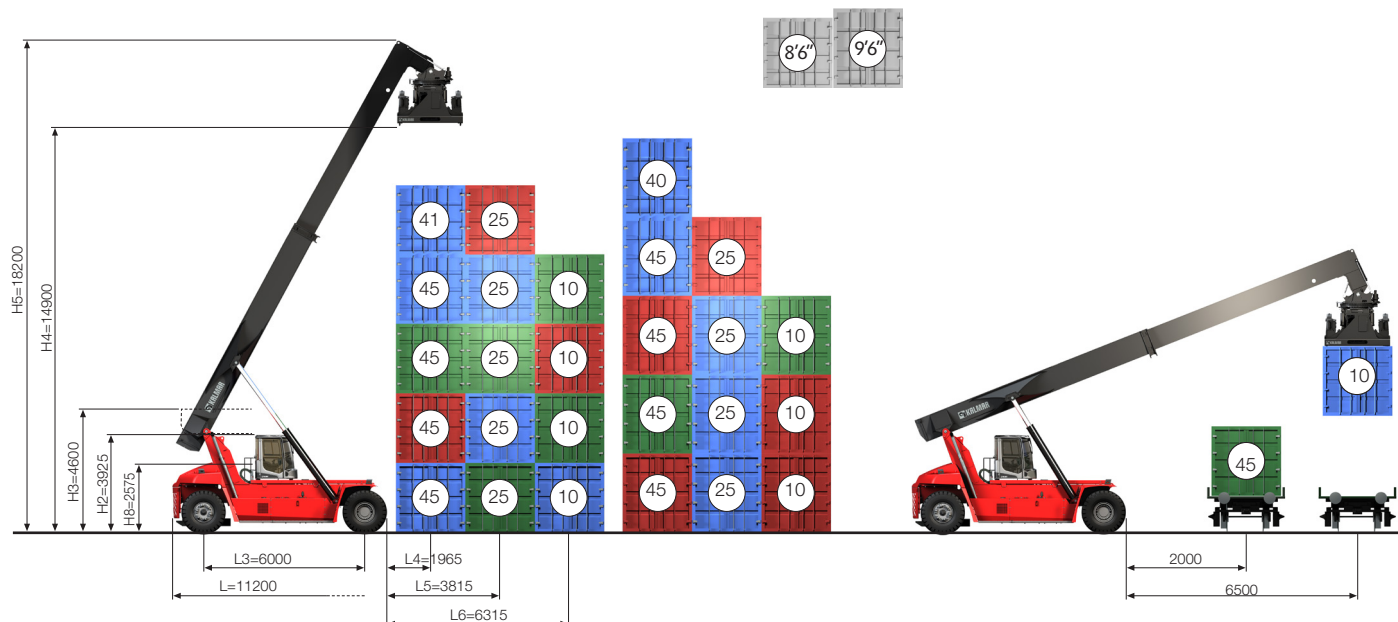
Manufacturer - type designation	ZF / 5WG-261
Clutch, type	Torque converter
Gearbox, type	Automatic Powershift
Number of gears, forward – reverse	5 - 3
Driving axle, manufacturer – type	Kessler D102, WDB, differential and hub reduction

**Wheels**

Tyre, type	Tubeless
Dimensions, front – rear (inch)	18.00x25 – 18.00x25, PR40 E4
Number of wheels, front – rear ("driven)	4 - 2
Pressure (MPa)	1,0

**Miscellaneous**

Steering system, type – maneuvering	Service assisted - Steering wheel
Service brake system, type – affected wheels	Wet disc brakes - Drive wheel
Parking brake system, type – affected wheels	Spring brake - Drive wheel
Noise level EN12053 with ECO modes - equivalent inside cabin LpAZ (dB(A))	69-71
Noise level EN12053 with ECO-modes - equivalent outside cabin LwAZ (dB(A))	107-110
Max. hydraulic pressure (MPa) boom / spreader	23,0
Fuel volume (l)	550
AdBlue volume (l)	-
Hydraulic oil volume (l)	600
Overload protection	Electronic



## Dimensions

		DRG450-60C5
Boom angle (°)	$\alpha$	60
Attachment rotation, CW – CCW (°)	$\beta$	195 - 105
Sideshift $\pm$ (mm)	V1	$\pm 800$
Spreader side tilt angle / tilt type		$\pm 5$ / MPS
Track (c-c), front – rear	S	3030 - 2800
Ground clearance, steer axle - middle - drive axle (mm)		250

The designs and materials specification are subject to alternation without prior notice.  
Tolerances according to K-standard 95430.0008/0009.

Kalmar offers the widest range of cargo handling solutions and services to ports, terminals, distribution centres and to heavy industry. Kalmar is the industry forerunner in terminal automation and in energy efficient container handling, with one in four container movements around the globe being handled by a Kalmar solution. Through its extensive product portfolio, global service network and ability to enable a seamless integration of different terminal processes, Kalmar improves the efficiency of every move. [www.kalmarglobal.com](http://www.kalmarglobal.com)

Kalmar is part of Cargotec. Cargotec's (Nasdaq Helsinki: CGCBV) sales in 2017 totalled approximately EUR 3,3 billion and it employs over 11.000 people. [www.cargotec.com](http://www.cargotec.com)



Cargotec Sweden AB  
Torggatan 3  
SE-340 10, Lidhult, Sweden  
tel. +46 372 260 10  
fax +46 372 263 90  
[www.kalmarglobal.com](http://www.kalmarglobal.com)